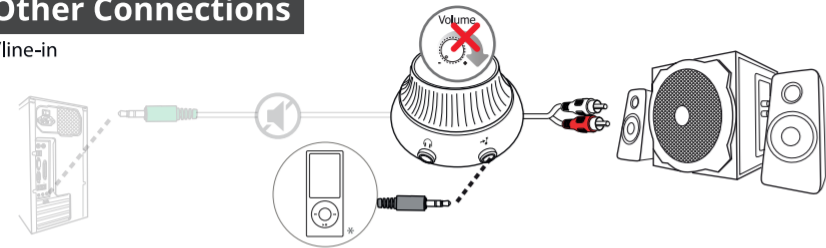
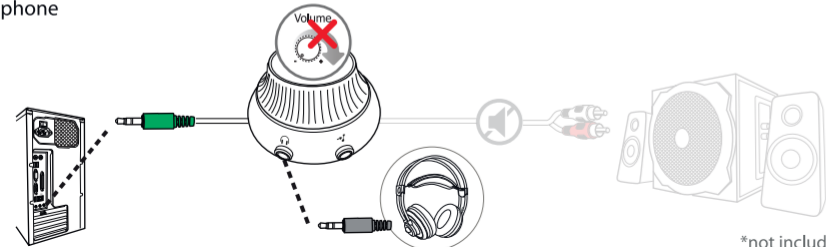


5. Other Connections

AUX/line-in



Headphone



*not included

6. Installation Windows 10/8/7

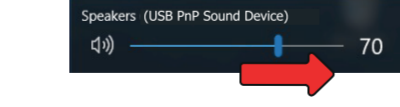
Windows 8
Start here



1x

1x

2



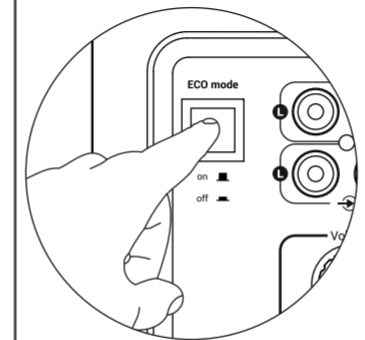
Windows 10/7/Vista
Start here

1

1x

2

7. ECO Mode



Frequently Asked Questions www.trust.com/22916/faq

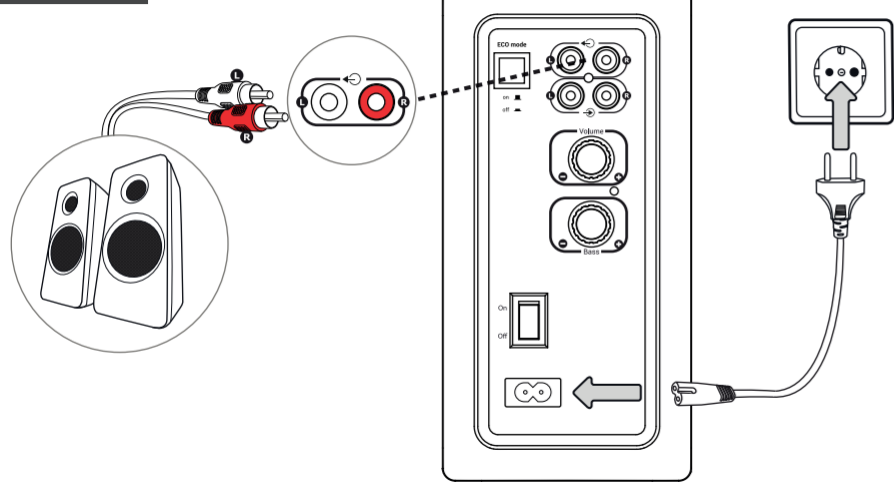
© 2018 Trust International B.V. - All rights reserved - Laan van Barcelona 600 - 3317DD - Dordrecht - NL

Trust 2.1 speaker set Cilax

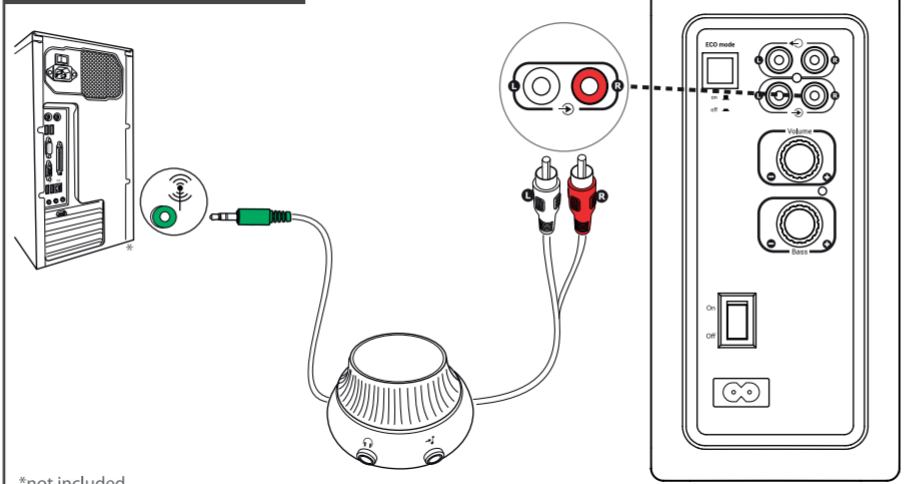


User Guide
Bedienungsanleitung
Mode d'emploi
Gebruikershandleiding
Manuale utente
Manual del usuario
Guia do utilizador
Brukerveiledning
Bruksanvisning
Käyttöopas
Brugsvejledning
Instrukcja obsługi
Návod k použití
Návod na používanie
Használati útmutató
Manual de utilizare
Ръководство за потребителя
Εγχειρίδιο χρήσης
Kullanıcı kılavuzu
Руководство пользователя
Uporabniški priročnik
Korisnički priručnik
Guia do usuário
Посібник користувача

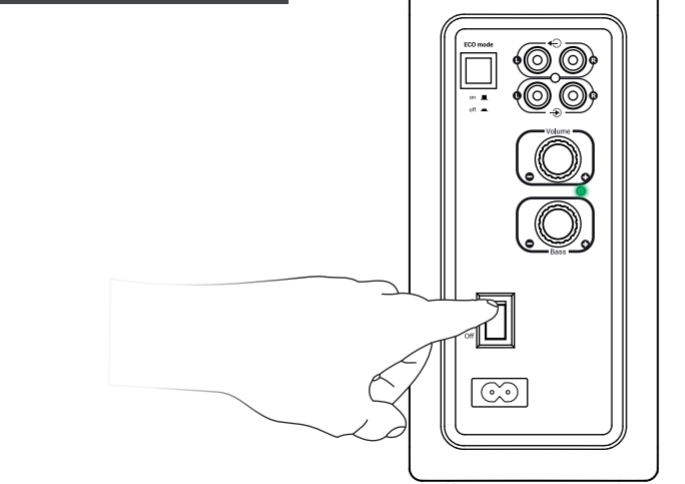
1. Setup



2. Connect Audio



3. Power On/Off



4. Volume Control

